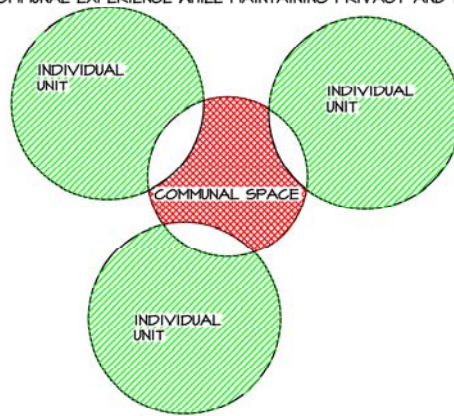


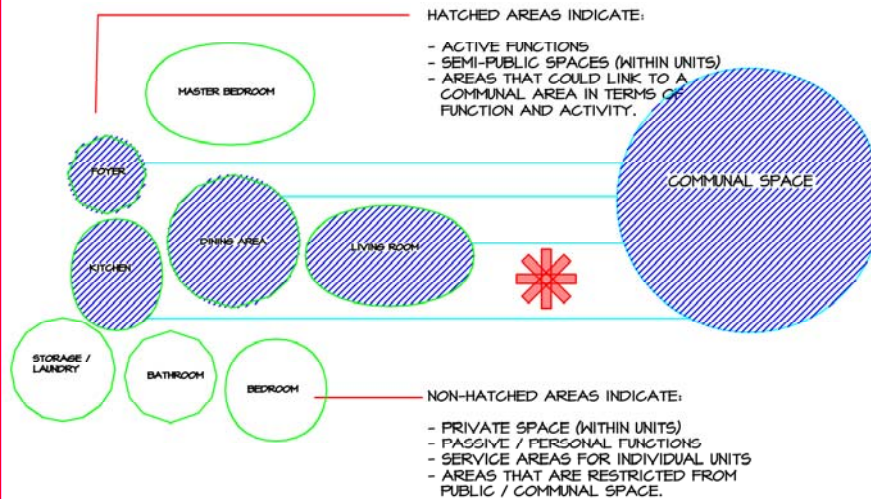
# 1 CONCEPTUAL DEVELOPMENT TOTAL CLUSTER

"PROVIDING A COMMUNAL EXPERIENCE WHILE MAINTAINING PRIVACY AND INDEPENDENCE."



- PROMOTE INTERACTION BETWEEN PEER GROUP
- ALLOW FOR EASY VISITS, GET-TOGETHERS, MEETINGS
- ALLOW FOR PRIVACY IF DESIRED.

## FUNCTIONAL RELATIONSHIPS



## COMMUNAL SPACE

COMMUNAL SPACE SIZE IS A FUNCTION OF INDIVIDUAL UNIT SIZE AND NUMBER OF UNITS.

THE COMMUNAL SPACE SERVES ONLY THOSE WITHIN THE IMMEDIATE CLUSTER, AND THEIR GUESTS.

- BECOMES THE PERSONAL COMMUNAL TERRITORY OF THE CLUSTER TO PROTECT AND MAINTAIN.
- ELIMINATES THE POSSIBILITY OF THE COMMUNAL SPACE FALLING INTO "NO-ONE'S LAND" WHERE THE RESPONSIBILITY FOR THE AREA IS IN QUESTION.

COMMUNAL SPACE MAY SERVE AS THE MAIN ADDRESS / FRONT DOOR FOR THE COLLECTIVE UNIT. AS A MAIN THOROUGHFARE, IT MAY PROVIDE ACCESS FROM THE STREET AS WELL AS VEHICLE LOT AREA.

